

Building with Vision...
Creating Quality...



Est. 1923



MELHUIH & SAUNDERS
BUILDING CONTRACTORS

THE COMPANY

Melhuish & Saunders is a family run business which has become a highly respected principal building contractor with a great reputation. The Company is based in Glastonbury, Somerset, operating within a 60 mile radius including Bath and Bristol, Dorset, Wiltshire, Gloucestershire and East Devon. We offer an all in one service with a quick response and expert advice and all work is guaranteed.

The Company has a unique team of highly skilled professionals and tradesmen who have a diverse knowledge of construction. Through continued investment in training, we ensure that all of our workforce operates to the highest standard.



Guest House, Spa and Conference Facility, Frome



Refurbishment of a Grade II listed building for Wells Cathedral



New Entrance and Cladding to Office Building, Moons Hill Quarry



New National Catering Equipment Centre, Avonmouth





New RSPCA Cotswold
Cats and Dogs Home,
Stroud

PROJECTS

Our wide range of clients and projects include new builds, refurbishments, extensions and renovations of Listed Buildings such as:

Registered Charities: e.g. National Trust; Somerset Earth Science Centre; RSPCA

Commercial: warehouses, offices, retail outlets, swimming pools and other leisure facilities

Education (Local Authorities and Private): classrooms, sports facilities, dormitories

Healthcare (inc NHS): medical centres, care homes, hospitals and dental surgeries

Residential: new build private dwellings, listed buildings, social housing

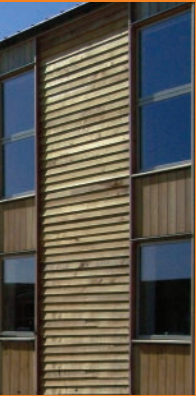
Public Sector: libraries, country park facilities, supported living centres



6 Classroom Extension,
Bridgwater



New Specialist Care
Facility, Priddy



New Trowbridge
Health Centre



New Warehouse
Facility - Wells



Rangers' and Visitors Centre,
Yeovil Country Park



20 Sustainable Homes,
Bristol



New Boarding Houses
– Phase 1 and 2,
St Mary's School, Calne

New Warehouse and
Office Facility, Frome



MELHUISH & SAUNDERS LTD
8/9 LANDMARK HOUSE WIRRAL PARK ROAD GLASTONBURY SOMERSET BA6 9FR
T: 01458 831349 F: 01458 898252 E: office@mandsltd.co.uk

www.mandsltd.co.uk

 @mandsltd  facebook.com/MelhuishandSaundersLtd

 Melhuish & Saunders Limited



MELHUISH & SAUNDERS
BUILDING CONTRACTORS

